

Ball Transfer Unit A805-45-16

Ball Units Series A8 - Wheel S/805



-30 °C - +70 °C

swivels easily

wear resistant

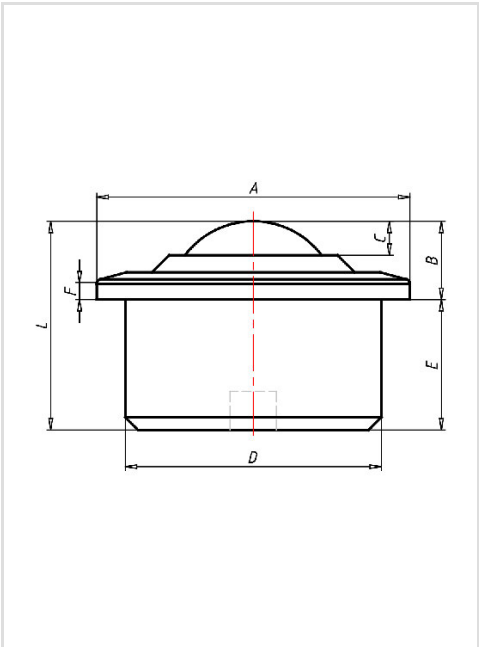
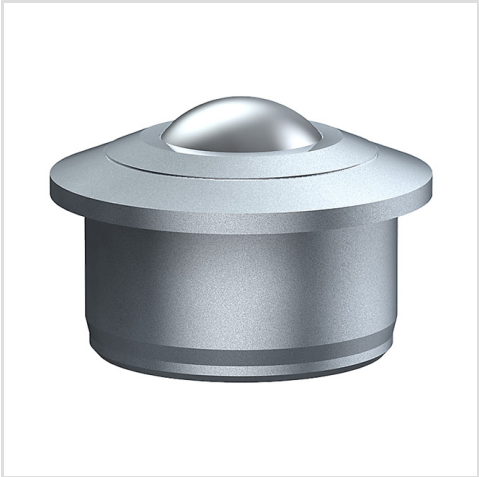
shock proof

floor protective

weather proof

Wheel

Ball: zinc-plated or stainless steel
Housing, zinc-plated or stainless steel



Ball Transfer Unit	
Series:	805
Ball-Ø mm:	45
Finish housing:	steel zinc plated
Finish Balls:	stainless steel
Load Capacity kg:	600
Load capacity tested according to EN 12530 and EN 12527	
A mm:	75
B mm:	19
C mm:	9
D mm:	62
E mm:	34,5
F mm:	3,8
L mm:	53,5

Advantages

- ✔ Casing made of solid steel on the lathe
- ✔ High load capacity
- ✔ Low profile
- ✔ Several holes to let out dirt 600% better

©Copyright 2024 Rollenbau GmbH, www.rollenbau.at 07.05.2024

Applications

- Haulage way
- Assembly lines